

# 6/12/24 VOLT CARBON PILE 1000 AMP LOAD TESTER

## OPERATING INSTRUCTIONS

### Battery Load Test

Connect the RED clamp to the Positive (+) battery terminal or post.

Connect the BLACK clamp to the Negative (-) battery terminal or post.

Note: If testing a battery in the vehicle, ensure the engine and all loads are 'OFF'.

Check the battery's open circuit voltage (OCV) on the DC Volt meter.

If the needle is in the green section of the 'State of Charge' scale (above 6.5V, 12.5V, 24.5V) the battery has sufficient charge to test.

If the needle is in the red section (below 6.5V, 12.5V, 24.5V) the battery needs to be fully charged before testing.

Determine the battery's rated capacity in Cold Cranking Amps (CCA) or Amp hours (Ah) and calculate the correct load current:

For starting batteries with: Load current = 1/2 the CCA rating

For Cycle Batteries with: Load current = 3 x Ah rating

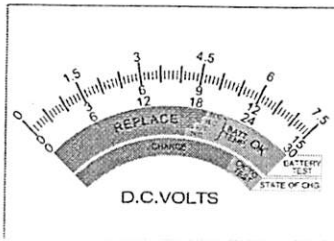
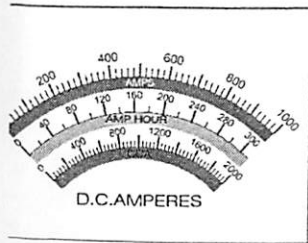
Turn the 'Load Control Knob' clockwise until the correct load current is reached on the DC Amps meter.

After 15 seconds the buzzer will sound to indicate the correct test time, immediately read the DC Volt meter.

If the needle is in the green area of the 'Battery Test' scale the battery has passed the test.

If the needle is in the red area the battery has failed the test, quickly reduce the load current until the needle moves back into the green area, and then read the approximate battery capacity in Ah or CCA from the DC Amps meter.

**WHEN THE METER HAS BEEN READ THE LOAD MUST BE TURNED OFF IMMEDIATELY TO PREVENT OVERHEATING – TURN THE LOAD CONTROL KNOB FULLY ANTI-CLOCKWISE.**



Note: Battery output varies due to temperature change, the 'Battery Test' scale has four temperature variations (21°, 10°, -1° and -18° Celcius). Use the closest scale to the approximate ambient temperature.



**CAUTION – BATTERIES PRODUCE EXPLOSIVE GASES, TO REDUCE THE RISK OF EXPLOSION OR INJURY ALWAYS ENSURE:**

- No sparks or flames are present
- Eye protection is worn
- All vehicle or battery manufacturer's instructions are followed
- The load is "OFF" before connection or disconnection
- Correct polarity, do not reverse connect
- Beware of moving engine parts

## NOTE

Carbon pile load testers produce a great amount of heat while the load is 'ON', do not apply the load for more than 20 seconds at a time and allow time to cool between tests.

When operating the unit for the first time it is normal for a small amount of smoke to develop as the lubricants used in the manufacturing process burn off.

## SPECIFICATIONS

P/No.	BT1000
Tests:	Volts (0–24VDC) 6/12/24V Lead Acid Batteries
Battery Range:	Up to 2000CCA (320Ah)
Test Load:	Adjustable Carbon Pile 0–1000 AMPS
Maximum Load 'ON' Time:	20 seconds
Recommended Cool Down Time:	2 minutes
Test time alert:	Buzzer sounds after 15 sec
Cable length:	1400mm
Size:	350mm x 355mm x 175mm
Weight:	8.4kg

For a more accurate result at different temperatures, use the following graph to determine the minimum voltage the battery can reach while under test.

